



13

S E 1 0





13

13

THE ARTISAN QUARTER OF SOUTH EAST LONDON IS THE HUB OF ART AND CULTURE, GREENWICH DRAWS PEOPLE FROM ALL OVER THE GLOBE TO SAMPLE ITS DELIGHTS.





# STYLISH & CONTEMPORARY LIVING

Nine modern apartments, 1, 2 or 3 bedrooms, all with unique architecture at their core, a central glass atrium ascending from fourth to ground floor, flooding natural sunlight into each level. Every aspect, from design to finish has been carefully considered, ensuring each home defines quality and high calibre.

All nine apartments benefit from spacious living areas, en-suite to master bedroom, modern, fitted kitchen and bathrooms and either a balcony or large terrace area.

London living at its finest, plenty of space to entertain, great location for venturing out on an evening or weekend and just a short journey into central London by tube or train.

## WHERE LIFE FLOURISHES



**A TRUE COMMUNITY WITH  
CITY CONVENIENCE &  
CAFE CULTURE**

**LOCAL BOOKSHOPS  
& ANTIQUE MARKETS**

**CONTEMPORARY DESIGN INSPIRED  
BY LONDON HERITAGE**

**RIVER FRONT LIFESTYLE**

**CITY & LONDON CONNECTIONS**

**183 ACRES OF ROYAL PARKLAND**

**THE ARTISAN QUARTER  
OF LONDON**





# LIVE THE PARK LIFE

Greenwich Park dates back to Tudor times, when it was a cultivated Royal hunting ground, take a stroll through the ancient trees, following in the footsteps of England's kings and queens. Offering one of the most iconic views of London, tranquillity in the flower garden and orchard, delectable afternoon tea at the Pavilion Café and an enclosed deer park, this Royal park has something for all to enjoy.





## GREENWICH OBSERVATORY

Visit the Royal Observatory, see the clocks John Harrison developed to solve the problem of longitude, stand astride the dividing point between east and west, the Meridian Line runs across the courtyard. See the stars at London's only planetarium, you can be whisked to the heart of the Sun and across distant galaxies.



## ROYAL MARITIME MUSEUM

The largest of its kind, this Royal museum is filled with tales of exploration, discovery and history. Learn more about Britain's encounter with the sea, the life and death of British hero Admiral Horatio Nelson and enjoy a nice pit stop at the Café, overlooking the beautiful Greenwich Park.



## THE O2

This world-famous venue attracts visitors from around the globe, with an iconic arena at its core, an 11-screen cinema, 26 bars and restaurants, as well as interactive and world-class experiences to sample, there is always something to do – you can even walk across the roof and take in the city-scape.



## CUTTY SARK

Become completely immersed in a piece of world history, Cutty Sark was built in 1869 to carry tea back from China and visited nearly every port in the world. Take the helm at the ship's wheel, then walk directly underneath and touch the hull of this record-breaking vessel.



# PLAY THE MARKETS

From the busy streets of London's financial capital, Canary Wharf, to the bustling stalls and shops of Greenwich Market, reap the benefits of living near both.

Canary Wharf, 14 million sq. ft. of retail and office space, home of One Canada Square, the second tallest building in the UK and many leisure and shopping opportunities. Skate around the seasonally erected ice rink and in the summer months enjoy your lunch al-fresco while watching Wimbledon on the Canary Wharf Summer Screens.

Greenwich Market, one of the best in London, offers a mix of arts and crafts, vintage clothes, hats, cards, antiques and collectables, street food and much more, surrounded by independent shops, galleries, boutiques, bars and bistros. Greenwich market is easily the hub of the area.





# WHERE CULTURE MEETS CUISINE

Greenwich offers a wealth of quality eateries, from street food to fine dining, marrying the charm and simplicity of riverside dining with the allure of the big city. This cultural corner of London boasts the most aesthetically unassuming Japanese fusion restaurant, the city's biggest craft beer, as well as modern, unpretentious pub dining rooms and so much more.

Find a hidden gem in the back streets or head to the impressive O2 Arena and choose from a range of cuisines on The Avenue, you won't be disappointed.

**CHAMPAGNE + FROMAGE ///**  
[www.champagneplusfromage.co.uk](http://www.champagneplusfromage.co.uk)

**STICKS N SUSHI ///**  
[www.sticksnsushi.co.uk](http://www.sticksnsushi.co.uk)

**PHO STREET ///**  
[www.phostreet.co.uk](http://www.phostreet.co.uk)

**PENINSULA RESTAURANT ///**  
[www.peninsula-restaurant.co.uk](http://www.peninsula-restaurant.co.uk)

**ZAIBATSU ///**  
[www.zaibatsufusion.co.uk](http://www.zaibatsufusion.co.uk)

**RIVINGTON ///**  
[www.rivingtongreenwich.co.uk](http://www.rivingtongreenwich.co.uk)





# BROADEN YOUR LONDON HORIZONS



**SOMERSET**  
house  
(18 mins)

**LONDON**  
bridge  
(11 mins)

**02 ARENA**  
(12 mins)

**the WEST**  
END  
(35 mins)

**CANARY**  
wharf  
(10 mins)

**BATTERSEA**  
park  
(54 mins)

**139**  
GREENWICH HIGH ROAD  
GREENWICH  
LONDON  
SE10 8JA

**GREENWICH MARKET**  
(05 mins)



THE HIGHEST SPECIFICATION



MODERN KITCHEN

Contemporary white kitchen cabinets  
Bianco sparkle quartz work surfaces

ALL APARTMENTS INCLUDE THE FOLLOWING HIGHLY EFFICIENT APPLIANCES:

- AEG built-in electric single oven
- AEG four ring gas hob
- AEG integrated fridge/freezer
- AEG washer/dryer
- AEG integrated dishwasher

QUALITY BATHROOMS

- White sanitary ware and stainless steel fittings
- Anti-mist, heated mirror
- Underfloor heating
- Tiling to walls and floor

HEATING & ELECTRICAL

- Wall hung natural gas-fired combi boiler
- Anthracite grey radiators
- Downlights to all rooms
- Ample sockets to all rooms
- Fibre optic internet available to all apartments

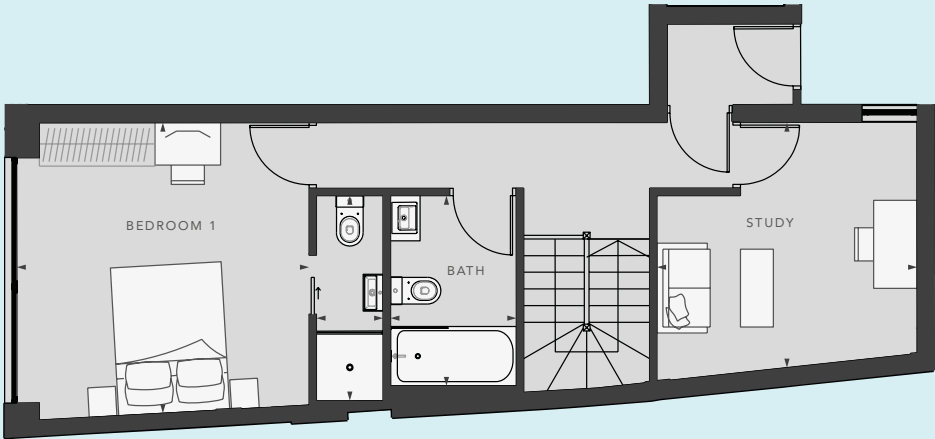
SERVICES & SECURITY

- LEDA video door system
- Smoke, heat and CO2 detectors are fitted
- Stannah lift to all floors

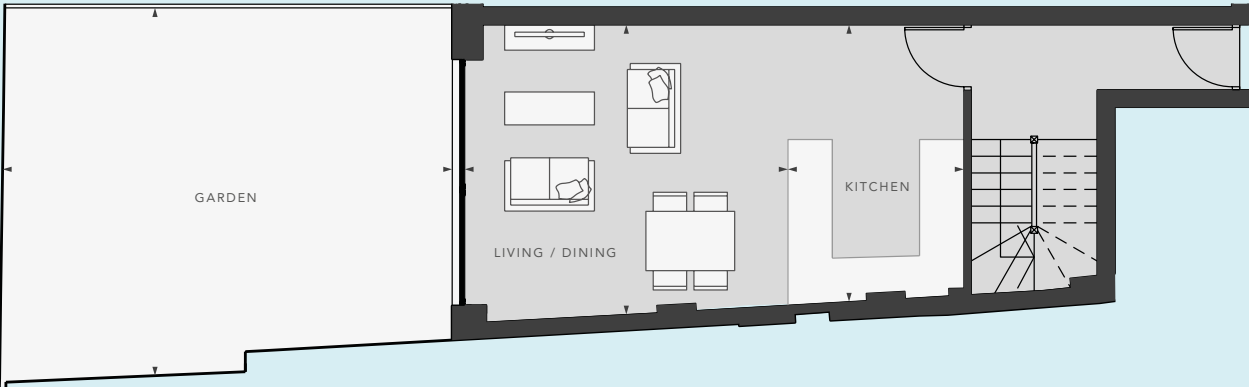
APARTMENT 01

All room dimensions are given in millimetres and are between finished plastered faces. Imperial dimensions are in feet and inches to the nearest lower full inch. Dimensions are the maximum dimensions and include any recesses. All measurements are taken from the architects' plans and are likely to vary during the construction process. Please consult your sales advisor for plot specific details on floorplans, window/door locations and parking details. Kitchen and bathroom layouts are indicative only, these details do not form part of any contract.

GROUND FLOOR



LOWER GROUND FLOOR



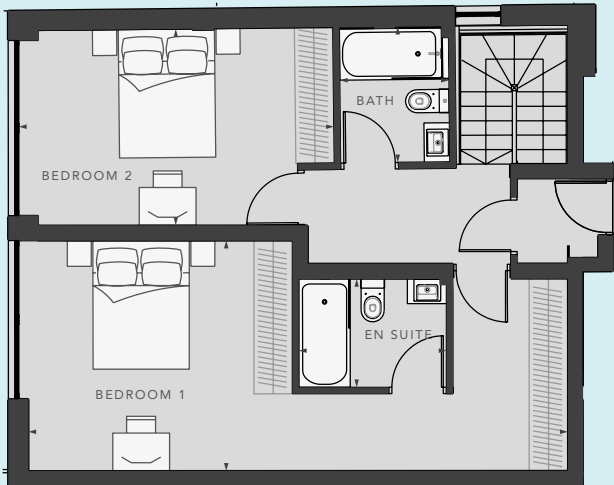
LIVING / DINING	12'10" x 14'9"   3910mm x 4370mm	BEDROOM 1	12'9" x 12'1"   3900mm x 3700mm
KITCHEN	7'9" x 12'3"   2380mm x 3740mm	BATHROOM	5'6" x 8'5"   1700mm x 2570mm
		STUDY	11'1" x 11'6"   3310mm x 3510mm
		GARDEN	16'3" x 19'10"   4970mm x 6070mm
TOTAL AREA	868.6 sq ft		



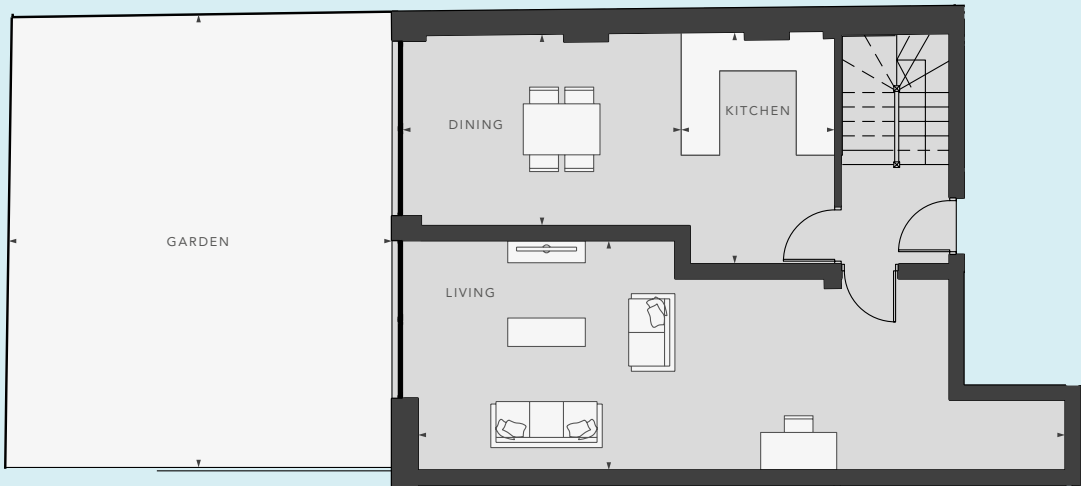
# APARTMENT 02

All room dimensions are given in millimetres and are between finished plastered faces. Imperial dimensions are in feet and inches to the nearest lower full inch. Dimensions are the maximum dimensions and include any recesses. All measurements are taken from the architects' plans and are likely to vary during the construction process. Please consult your sales advisor for plot specific details on floorplans, window/door locations and parking details. Kitchen and bathroom layouts are indicative only, these details do not form part of any contract.

GROUND FLOOR



LOWER GROUND FLOOR

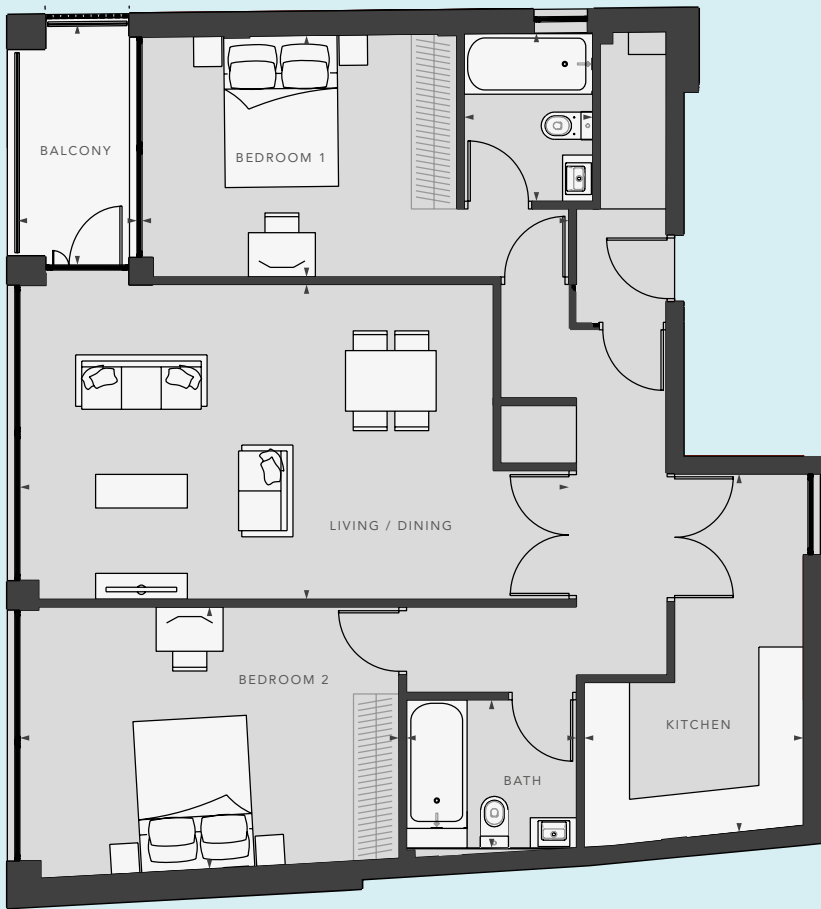


LIVING	11'8" x 33'2"   3580mm x 10110mm	BEDROOM 1	11'4" x 27'6"   3580mm x 8400mm
DINING	9'9" x 14'3"   2990mm x 4360mm	BEDROOM 2	10'0" x 16'0"   3060mm x 4900mm
KITCHEN	11'10" x 7'10"   3610mm x 2400mm	BATHROOM	6'11" x 5'6"   2110mm x 1700mm
TOTAL AREA	1402.5 sq ft	GARDEN	23'2" x 19'7"   7080mm x 5990mm

# APARTMENT 03

All room dimensions are given in millimetres and are between finished plastered faces. Imperial dimensions are in feet and inches to the nearest lower full inch. Dimensions are the maximum dimensions and include any recesses. All measurements are taken from the architects' plans and are likely to vary during the construction process. Please consult your sales advisor for plot specific details on floorplans, window/door locations and parking details. Kitchen and bathroom layouts are indicative only, these details do not form part of any contract.

FIRST FLOOR



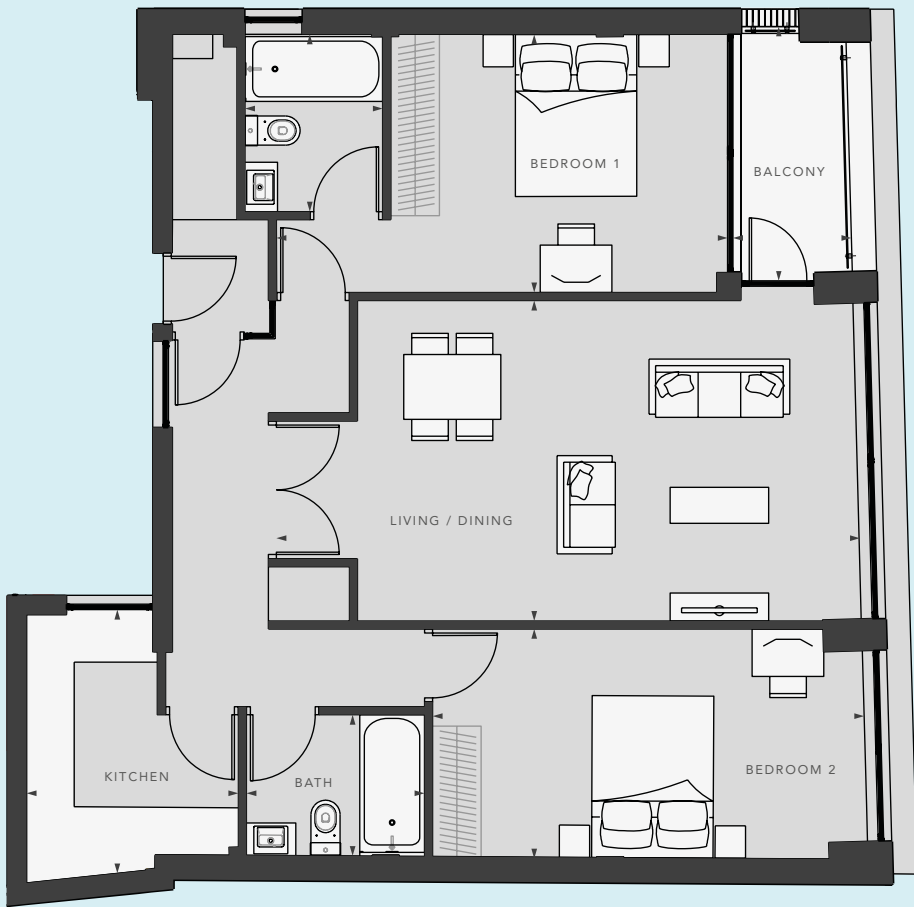
LIVING / DINING	13'7" x 23'9"   4160mm x 7260mm	BEDROOM 1	10'5" x 18'4"   3190mm x 5650mm
KITCHEN	9'6" x 15'6"   2900mm x 4740mm	BEDROOM 2	11'4" x 16'5"   3460mm x 5010mm
TOTAL AREA	1042.6 sq ft	BATHROOM	6'5" x 7'4"   1970mm x 2250mm
		BALCONY	5'1" x 10'5"   1570mm x 3180mm



APARTMENT  
04

All room dimensions are given in millimetres and are between finished plastered faces. Imperial dimensions are in feet and inches to the nearest lower full inch. Dimensions are the maximum dimensions and include any recesses. All measurements are taken from the architects' plans and are likely to vary during the construction process. Please consult your sales advisor for plot specific details on floorplans, window/door locations and parking details. Kitchen and bathroom layouts are indicative only, these details do not form part of any contract.

FIRST FLOOR

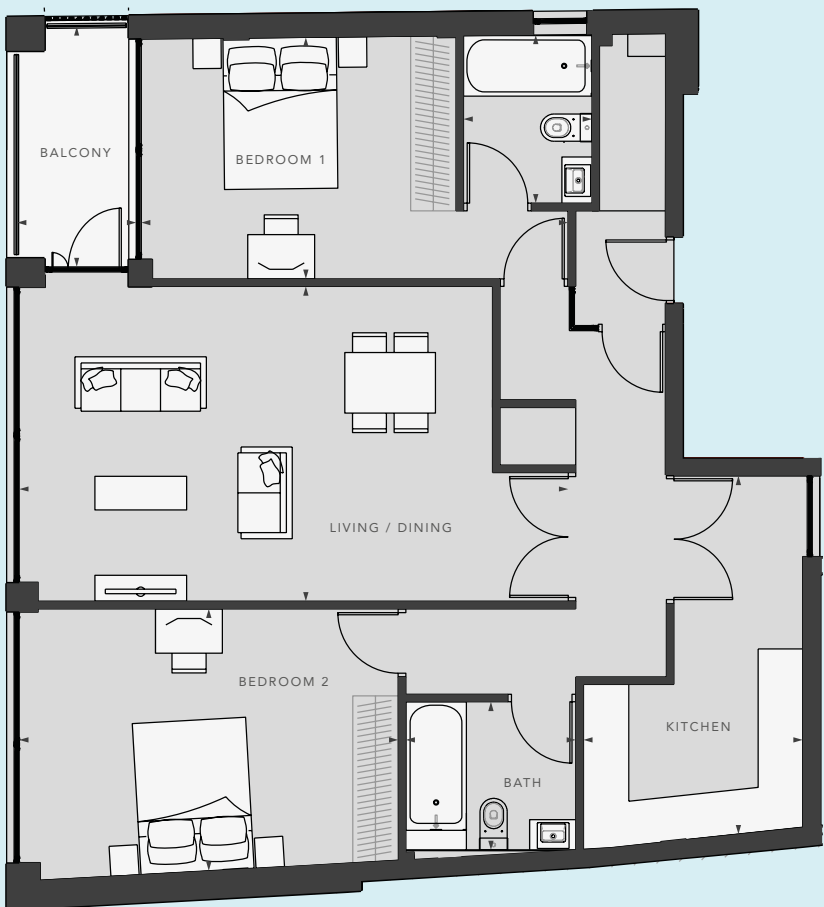


LIVING / DINING	12'11" x 23'7"   3950mm x 7210mm	BEDROOM 1	10'5" x 18'2"   3180mm x 5570mm
KITCHEN	8'6" x 10'5"   2610mm x 3190mm	BEDROOM 2	9'3" x 17'10"   2830mm x 5460mm
		BATHROOM	5'8" x 7'2"   1740mm x 2200mm
		BALCONY	4'9" x 10'3"   1460mm x 3140mm
TOTAL AREA	932.5 sq ft		

APARTMENT  
05

All room dimensions are given in millimetres and are between finished plastered faces. Imperial dimensions are in feet and inches to the nearest lower full inch. Dimensions are the maximum dimensions and include any recesses. All measurements are taken from the architects' plans and are likely to vary during the construction process. Please consult your sales advisor for plot specific details on floorplans, window/door locations and parking details. Kitchen and bathroom layouts are indicative only, these details do not form part of any contract.

SECOND FLOOR



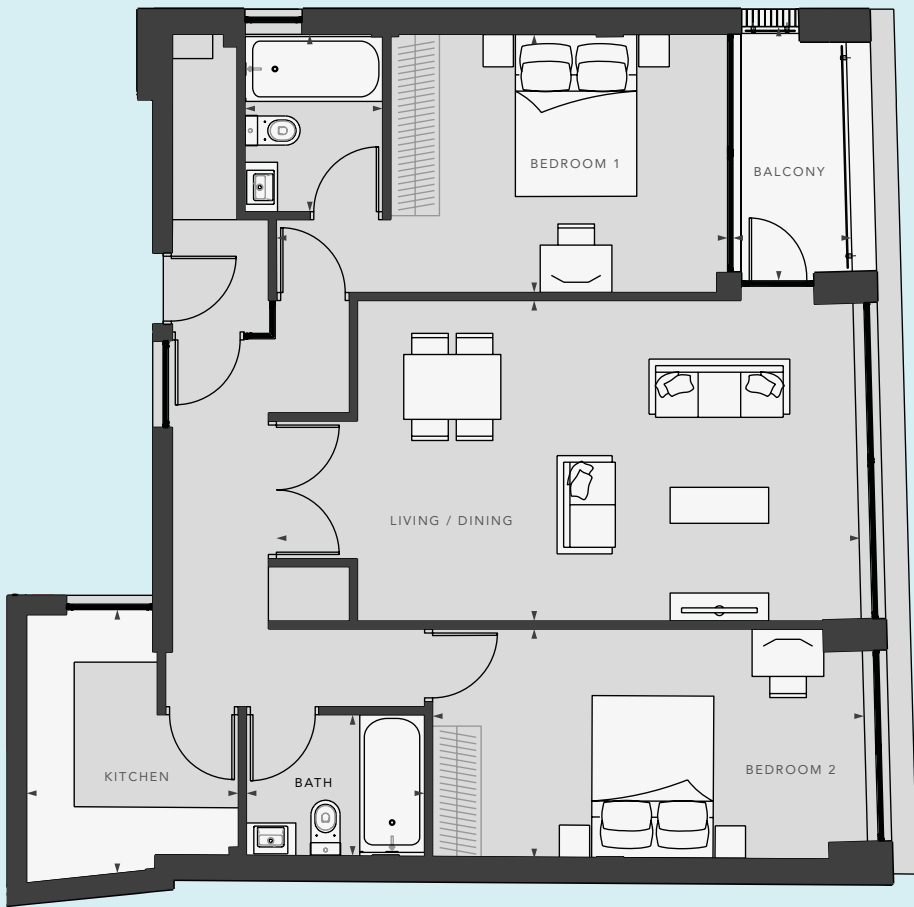
LIVING / DINING	13'7" x 23'9"   4160mm x 7260mm	BEDROOM 1	10'5" x 18'4"   3190mm x 5650mm
KITCHEN	9'6" x 15'6"   2900mm x 4740mm	BEDROOM 2	11'4" x 16'5"   3460mm x 5010mm
		BATHROOM	6'5" x 7'4"   1970mm x 2250mm
		BALCONY	5'1" x 10'5"   1570mm x 3180mm
TOTAL AREA	1042.6 sq ft		



APARTMENT  
06

All room dimensions are given in millimetres and are between finished plastered faces. Imperial dimensions are in feet and inches to the nearest lower full inch. Dimensions are the maximum dimensions and include any recesses. All measurements are taken from the architects' plans and are likely to vary during the construction process. Please consult your sales advisor for plot specific details on floorplans, window/door locations and parking details. Kitchen and bathroom layouts are indicative only, these details do not form part of any contract.

SECOND FLOOR

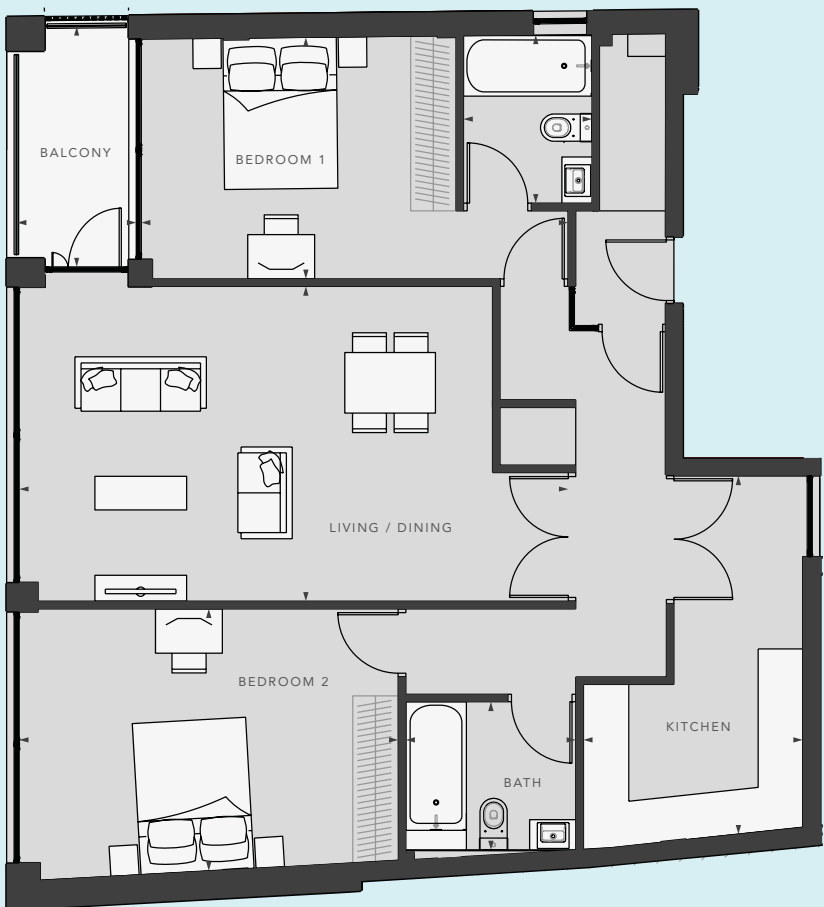


LIVING / DINING	12'11" x 23'7"   3950mm x 7210mm	BEDROOM 1	10'5" x 18'2"   3180mm x 5570mm
KITCHEN	8'6" x 10'5"   2610mm x 3190mm	BEDROOM 2	9'3" x 17'10"   2830mm x 5460mm
		BATHROOM	5'8" x 7'2"   1740mm x 2200mm
		BALCONY	4'9" x 10'3"   1460mm x 3140mm
TOTAL AREA	941.6 sq ft		

APARTMENT  
07

All room dimensions are given in millimetres and are between finished plastered faces. Imperial dimensions are in feet and inches to the nearest lower full inch. Dimensions are the maximum dimensions and include any recesses. All measurements are taken from the architects' plans and are likely to vary during the construction process. Please consult your sales advisor for plot specific details on floorplans, window/door locations and parking details. Kitchen and bathroom layouts are indicative only, these details do not form part of any contract.

THIRD FLOOR



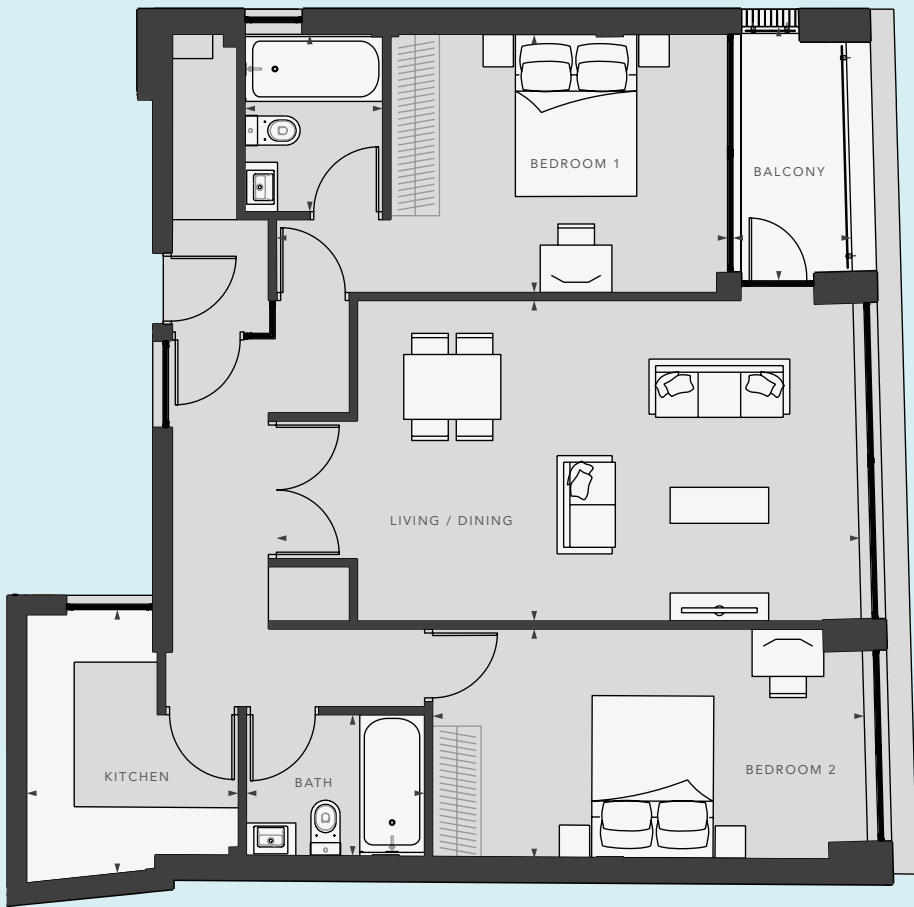
LIVING / DINING	13'7" x 23'9"   4160mm x 7260mm	BEDROOM 1	10'5" x 18'4"   3190mm x 5650mm
KITCHEN	9'6" x 15'6"   2900mm x 4740mm	BEDROOM 2	11'4" x 16'5"   3460mm x 5010mm
		BATHROOM	6'5" x 7'4"   1970mm x 2250mm
		BALCONY	5'1" x 10'5"   1570mm x 3180mm
TOTAL AREA	1042.6 sq ft		



APARTMENT  
08

All room dimensions are given in millimetres and are between finished plastered faces. Imperial dimensions are in feet and inches to the nearest lower full inch. Dimensions are the maximum dimensions and include any recesses. All measurements are taken from the architects' plans and are likely to vary during the construction process. Please consult your sales advisor for plot specific details on floorplans, window/door locations and parking details. Kitchen and bathroom layouts are indicative only, these details do not form part of any contract.

THIRD FLOOR



LIVING / DINING	12'11" x 23'7"   3950mm x 7210mm	BEDROOM 1	10'5" x 18'2"   3180mm x 5570mm
KITCHEN	8'6" x 10'5"   2610mm x 3190mm	BEDROOM 2	9'3" x 17'10"   2830mm x 5460mm
		BATHROOM	5'8" x 7'2"   1740mm x 2200mm
		BALCONY	10'3" x 4'7"   3220mm x 1620mm
TOTAL AREA	941.6 sq ft		

APARTMENT  
09

All room dimensions are given in millimetres and are between finished plastered faces. Imperial dimensions are in feet and inches to the nearest lower full inch. Dimensions are the maximum dimensions and include any recesses. All measurements are taken from the architects' plans and are likely to vary during the construction process. Please consult your sales advisor for plot specific details on floorplans, window/door locations and parking details. Kitchen and bathroom layouts are indicative only, these details do not form part of any contract.

FOURTH FLOOR



LIVING / DINING	19'6" x 20'9"   5950mm x 6330mm	BEDROOM 1	10'5" x 18'6"   3190mm x 5650mm
KITCHEN	5'10" x 13'7"   1800mm x 4160mm	BEDROOM 2	11'0" x 13'3"   3360mm x 4050mm
		BEDROOM 3	11'9" x 14'7"   3600mm x 4460mm
		BATHROOM	5'6" x 7'4"   1700mm x 2200mm
		TERRACE	10'5" x 28'2"   1580mm x 3180mm
TOTAL AREA	1110.4 sq ft	BALCONY	5'1" x 10'3"   1570mm x 3050mm





The Kallars logo, featuring a stylized 'K' made of three parallel diagonal lines.

kallars

[www.kallars.com](http://www.kallars.com)

[newhomes@kallars.com](mailto:newhomes@kallars.com)

020 3848 1399